

Portable Ventilator

# MTV1000



ICU Grade Ventilator  
Monitoring FiO<sub>2</sub>, option SpO<sub>2</sub> and EtCO<sub>2</sub>  
Electronic PEEP and Blender control  
Built-in Air generator - Turbine blower type  
Built-in rechargeable Battery  
Dual & Single Limb circuit Compatible

**MEK**

# Fully Featured Ventilator

Extreme flexibility without compromising places and quality of care



## Predicted Body Weight

When if PBW function being used, the single ventilation amount of mechanical ventilation is determined to Predicted Body Weight formula based on selected patient's category and gender.

The default setting value is 8 ml/kg. This value can be changed in the BWF (Body weight factor) field in the SYSTEM column of the active window. When operated with PBW turned on, the setting value of the once ventilation amount is limited according to the set patient's height and gender's BWF setting.

## A Variety of Ventilation Mode

MTV1000 is an ICU-grade ventilator designed for mobility.

The essential functions and high performance of system can save your efforts for patient care

### Standard Ventilation Modes

PACV, PSIMV, VACV, VSIMV, PRVC-SIMV  
Spont, PRVC, Auto-Mode  
Apnea Back-up ventilation, O<sub>2</sub> Stream

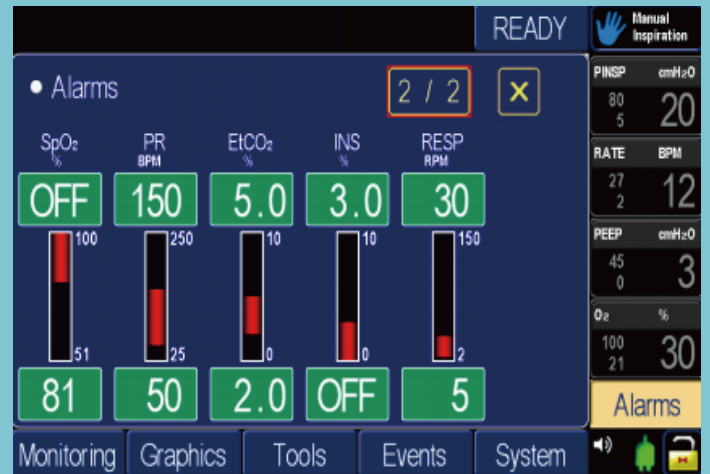
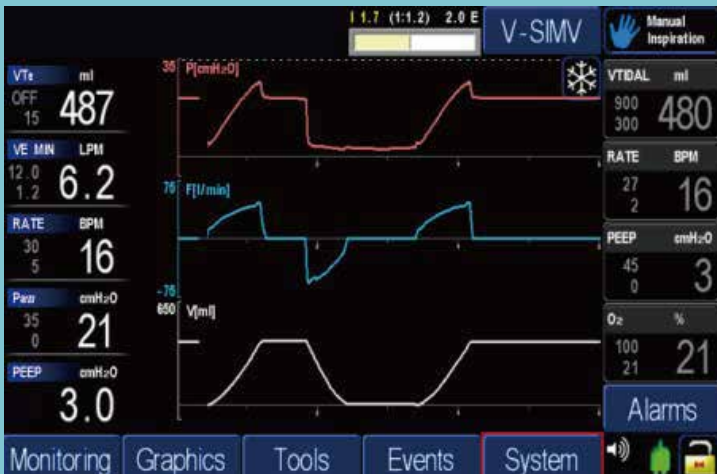
### Additional Options

Accessory : 12.1" Ext. TFT LCD Monitor, Cart  
Vital Sign Function : SpO<sub>2</sub>, EtCO<sub>2</sub>

# Easy to Manage Ventilator

## Navigation Screen

MTV1000 provides more useful information to clinicians. Easy to read and control allows to help quick access and operating.



## Waveform Screen

Configurable waveforms for flow, pressure, tidal volume, SpO<sub>2</sub>, EtCO<sub>2</sub> etc.

## Alarm Screen

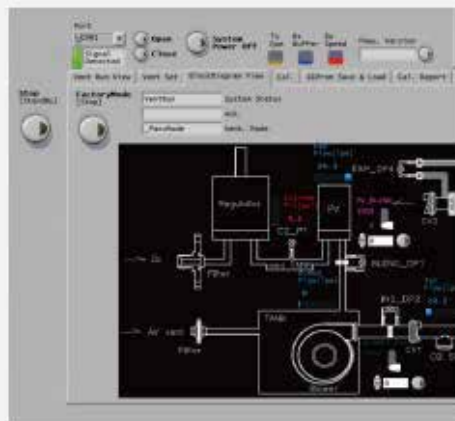
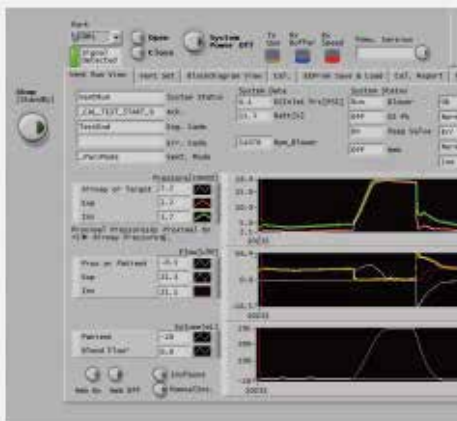
All alarm settings are displayed on one screen.

## Touch Screen and Encoder Alarm LED

Easy to operate through touch screen and encoder.

Even when an alarm sounds function is turned off, an alarm is displayed visibly on the screen.

## Smart PC Viewer System



Just see the Lab Viewer Program when you have maintaining the system without any system disassemble.

- Easy to understand with block diagram
- Easy to check internal system status
- Easy to adjust & calibrate without disassembly(Programmable pneumatic system)
- E-manual & E-Instruction

# Non-disconnection solution to avoid Ventilator-Associated Pneumonia

Weaning the ventilation is possible without disconnected mechanical controlled ventilation Till to T-piece trial ventilation.

## O<sub>2</sub> Stream High Flow Nasal Cannula Therapy

It is non-invasive respiratory therapy to improve of lung oxygenation that as supplying the heated and humidified oxygen requirements that exceed the patient's inspiratory peak flow rate through nose, reduce the intake of work of breathing, increase the functional residual capacity by rising of PEEP, optimize the nasal and the status of the mucosa of the upper respiratory track, and reduce the residual exhalation gas of dead space anatomically.

### Feature of Nasal High Flow Oxygen Therapy

- Efficient Oxygenation
- Washout of nasopharyngeal dead space (CO<sub>2</sub> Ventilation)
- Increase Functional Residual Capacity
- Reduce Work Of Breathing



### SpO<sub>2</sub>, EtCO<sub>2</sub> Measurements Hemodynamics

This option can provide information of metabolic CO<sub>2</sub> and SpO<sub>2</sub> as the result of respiration. This information can be useful to a clinician for patient care without independent gas monitoring system and for reducing complete dependency on Arterial Blood Gas Analysis (ABGA).

### Ventilator with Nebulization System

MTV1000 offers Pneumatic nebulizer System

### Successful Weaning with variety Modes

O<sub>2</sub> Stream : T-Piece Trial

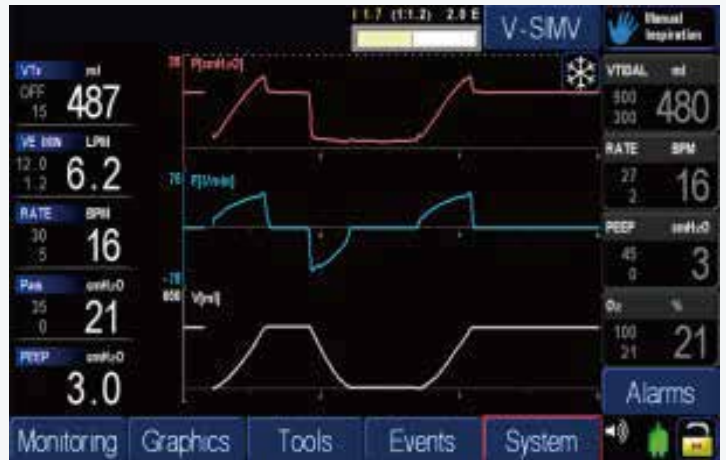
O<sub>2</sub> Stream : High Flow Nasal Cannula

## MTV1000 Highlights

- ICU, ER, Transportable, General ward, Medical care facility or Silver hospital
- ICU-Grade performance ventilator with unique pneumatic technology
- Both Invasive and Non-invasive ventilation applied
- Dual and Single limb circuit applicable

# Product Overview

## User Interface



## MTV1000 ICU Package



- 1 Alarm LED
- 2 7" Color Touch Screen
- 3 SpO<sub>2</sub>, EtCO<sub>2</sub> Option modules
- 4 Exhalation Valve Assembly
- 5 12" Color External LCD (option)
- 6 Low Flow Oxygen Inlet
- 7 High Pressure Oxygen Inlet

## MTV1000 Specification

Model	MTV1000
Dual Limb/ Single Limb with ExValve	PACV, PSIMV, VACV, VSIMV, PRVC-SIMV Spont, PRVC, Auto-Mode Apnea Back-up ventilation, O <sub>2</sub> Stream
O <sub>2</sub> Blender	YES
Ex-Valve	YES
Display	7" Touch Color LCD
Volume	50 ~ 2,500 ml
Respiratory Rate	2~120 bpm
PEEP / CPAP	0~ 50 cm H <sub>2</sub> O
Optional	EtCO <sub>2</sub> , SpO <sub>2</sub> , Nasal Cannula for O <sub>2</sub> Stream

# MTV1000

## Versatile Ventilator with Full Features

### A variety of Ventilation Modes

MTV1000 is an ICU-grade ventilator designed for mobility.  
The essential functions and high performance of system can save your efforts for patient care.

#### Standard :

PACV, PSIMV, VACV, VSIMV, Spont+ / CPAP, PRVC, AutoMode, Apnea Back-up ventilation, O<sub>2</sub>Stream®

#### Additional Options :

Accessory : 12.1" Ext. TFT LCD Monitor, Nasal Cannula for O<sub>2</sub>Stream®

Vital Sign Functions : SpO<sub>2</sub>, EtCO<sub>2</sub>

Nebulizer function : Pneumatic

Cart : Mobile Cart for MTV1000, Mobile Cart for ICU package (12.1" LCD Monitor)

### MTV1000 Highlights

- ICU, ER, transportable, general ward, medical care facility or silver hospital (Home care patient)
- ICU-grade performance ventilator with unique pneumatic technology
- Both Invasive and non-invasive ventilation applied
- Dual and single limb circuit applicable

MTV1000 meets the essential requirements on performance, accuracy and high safety.  
The MTV1000 ventilator complies with :

- CE2460
- KGMP
- ISO13485

As MEKICS's products are ceaselessly improved, the actual product may differ from the descriptions, specifications, and the pictures in this publications.



#### MEKICS CO., LTD

21, Sangjiseok-gil, Paju-si, Gyeonggi-do, 10911, Korea  
T. 82 70 7119 2521 F. 82 70 5052 5800 sales@mek-ics.com  
www.mek-ics.com